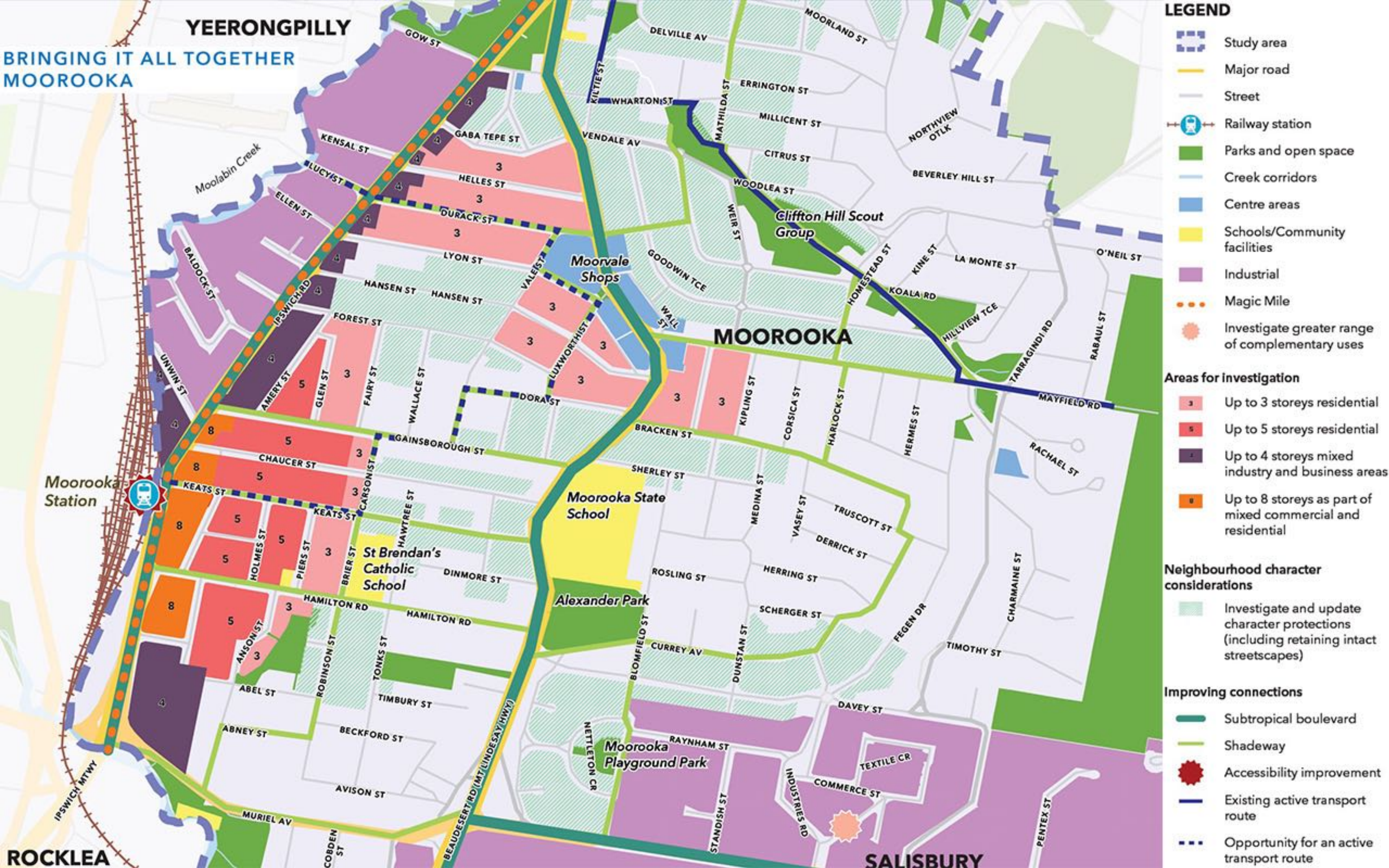


# The Nathan, Salisbury, Moorooka Neighbourhood Plan





BRINGING IT ALL TOGETHER  
MOOROOKA

# YEERONGPILLY

## LEGEND

- Study area
- Major road
- Street
- Railway station
- Parks and open space
- Creek corridors
- Centre areas
- Schools/Community facilities
- Industrial
- Magic Mile
- Investigate greater range of complementary uses

- ### Areas for investigation
- 3 Up to 3 storeys residential
  - 5 Up to 5 storeys residential
  - 4 Up to 4 storeys mixed industry and business areas
  - 8 Up to 8 storeys as part of mixed commercial and residential

- ### Neighbourhood character considerations
- Investigate and update character protections (including retaining intact streetscapes)

- ### Improving connections
- Subtropical boulevard
  - Shadeway
  - Accessibility improvement
  - Existing active transport route
  - Opportunity for an active transport route

Moorooka Station

# MOOROOKA

Clifton Hill Scout Group

Moorvale Shops

Moorooka State School

St Brendan's Catholic School

Alexander Park

Moorooka Playground Park

# SALISBURY

# ROCKLEA

Moolabin Creek

IPSWICH MTWY

BEAUDESERT RD (MT LINDSAY HWY)

GOW ST

KENSAL ST

GABA TEPE ST

HELLES ST

DURACK ST

LYON ST

HANSEN ST

HANSEN ST

FOREST ST

FAIRY ST

WALLACE ST

DORA ST

GAINSBOROUGH ST

CHAUCER ST

KEATS ST

KEATS ST

HAMILTON RD

HAMILTON RD

ROBINSON ST

BECKFORD ST

AVISON ST

DELVILLE AV

WHARTON ST

VENDALE AV

KILTIE ST

WHARTON ST

GOODWIN TCE

WALL ST

BRACKEN ST

SHERLEY ST

ROSLING ST

BLOMFIELD ST

CURREY AV

NETTLETON CR

RAYNHAM ST

STANDISH ST

INDUSTRIES RD

DAVEY ST

COMMERCE ST

TEXTILE CR

PENTEX ST

MOORLAND ST

ERRINGTON ST

MILLICENT ST

CITRUS ST

WOODLEA ST

WEIR ST

HOMESTEAD ST

KOALA RD

HILLVIEW TCE

CORSICA ST

HARLOCK ST

HERMES ST

MEDINA ST

VASEY ST

TRUSCOTT ST

DERRICK ST

SCHERGER ST

DUNSTAN ST

FEGEN DR

TIMOTHY ST

NORTHVIEW OTLK

BEVERLEY HILL ST

KINE ST

LA MONTE ST

O'NEIL ST

RABAUL ST

MAYFIELD RD

CHARMAINE ST

TARRAGINDI RD

CHARMAINE ST

CHARMAINE ST

CHARMAINE ST

CHARMAINE ST

CHARMAINE ST

CHARMAINE ST

CHARMAINE ST

CHARMAINE ST

CHARMAINE ST

CHARMAINE ST

CHARMAINE ST

CHARMAINE ST

CHARMAINE ST

CHARMAINE ST





# SALISBURY

**Streets:** COBDEN ST, GLADSTONE ST, BEAUDESERT RD (M), ASSEMBLY ST, BEARING ST, LATHE ST, PRECISION ST, EVANS RD, HAYLING ST, CHALFONT ST, BIRCHDALE ST, PENRITH ST, WINCOTT ST, ALLANDALE ST, FAIRLAWN ST, EDGEHILL ST, DELWOOD ST, TOORAK RD, WINSOME RD, MYRA RD, DOUGLAS RD, FREWIN ST, HENSON RD, KELLETT RD, NESS RD, TAMBLYN RD, CRIPPS ST, GEORGINA ST, MASSINGER ST, AINSWORTH ST, MEYNELL ST, HUMBER ST, ORANGE GROVE RD, MELINA ST, MALVERN ST, LOWNDES ST, LAUNCESTON ST, SALISBURY STATION, OLIVIA AV, BLACKWOOD RD, LILLIAN AV, AINGER ST, AIRD ST, HATTON ST, MAURICE AV, BASIL ST, COURTLAND ST, BELLEVUE AV, GREER RD, TUCKETT RD, HARLEN RD, BIDDER ST, MAITLAND ST, REGIS ST, LEAH AV, GOLDA AV, RIAWENA RD (RENSHAW ST), PERRIN PL, BURGESS ST.

**Parks and Green Spaces:** Assembly St Park, Brisbane Christian College, Salisbury Recreation Reserve, Wilcox Park, Salisbury Community Sports Club.

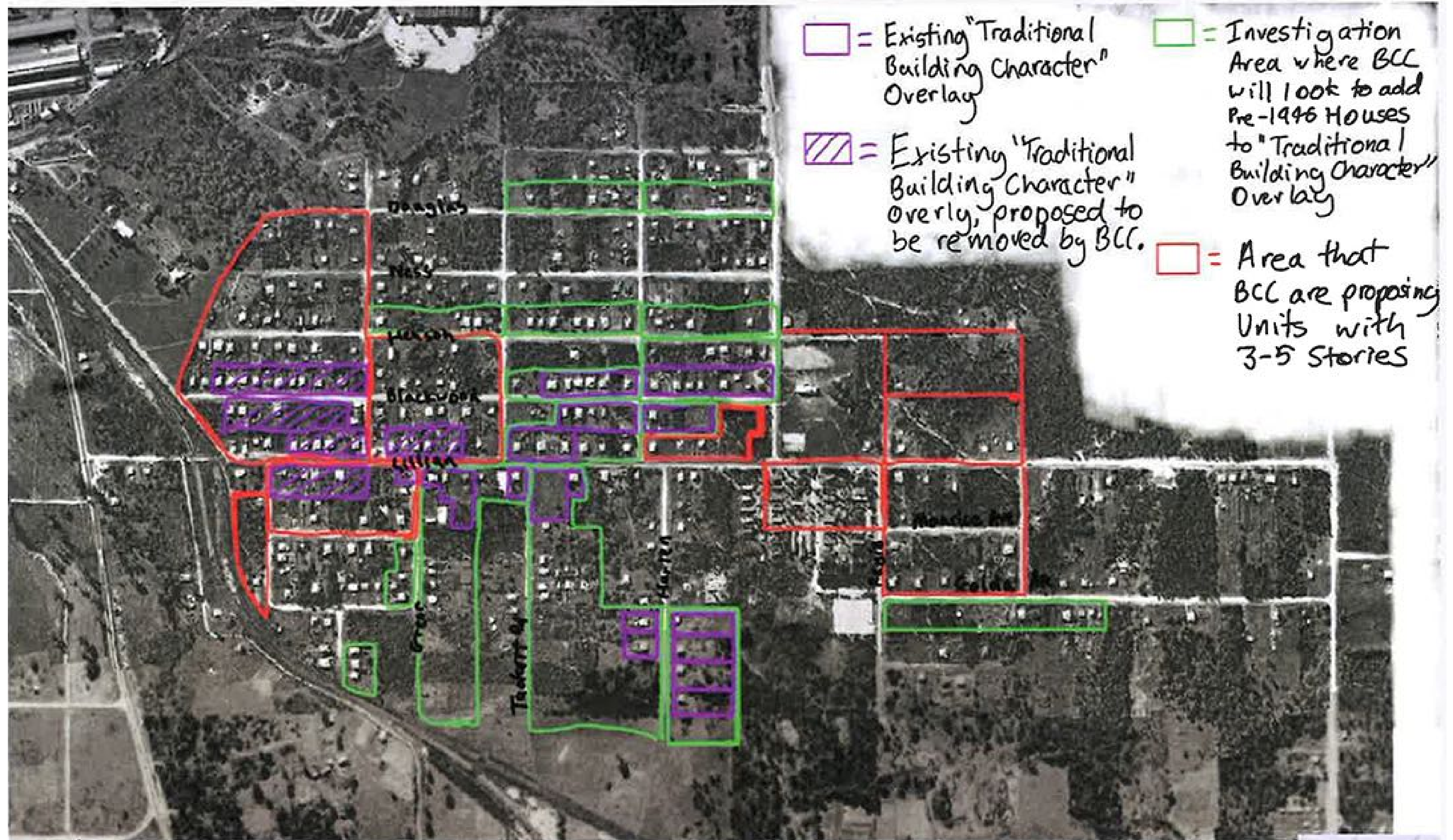
**Schools:** Brisbane Christian College, Salisbury State School, St. Pius X Catholic Primary School.

**Waterways:** Rocky Water Holes Creek, Stable Swamp Creek.

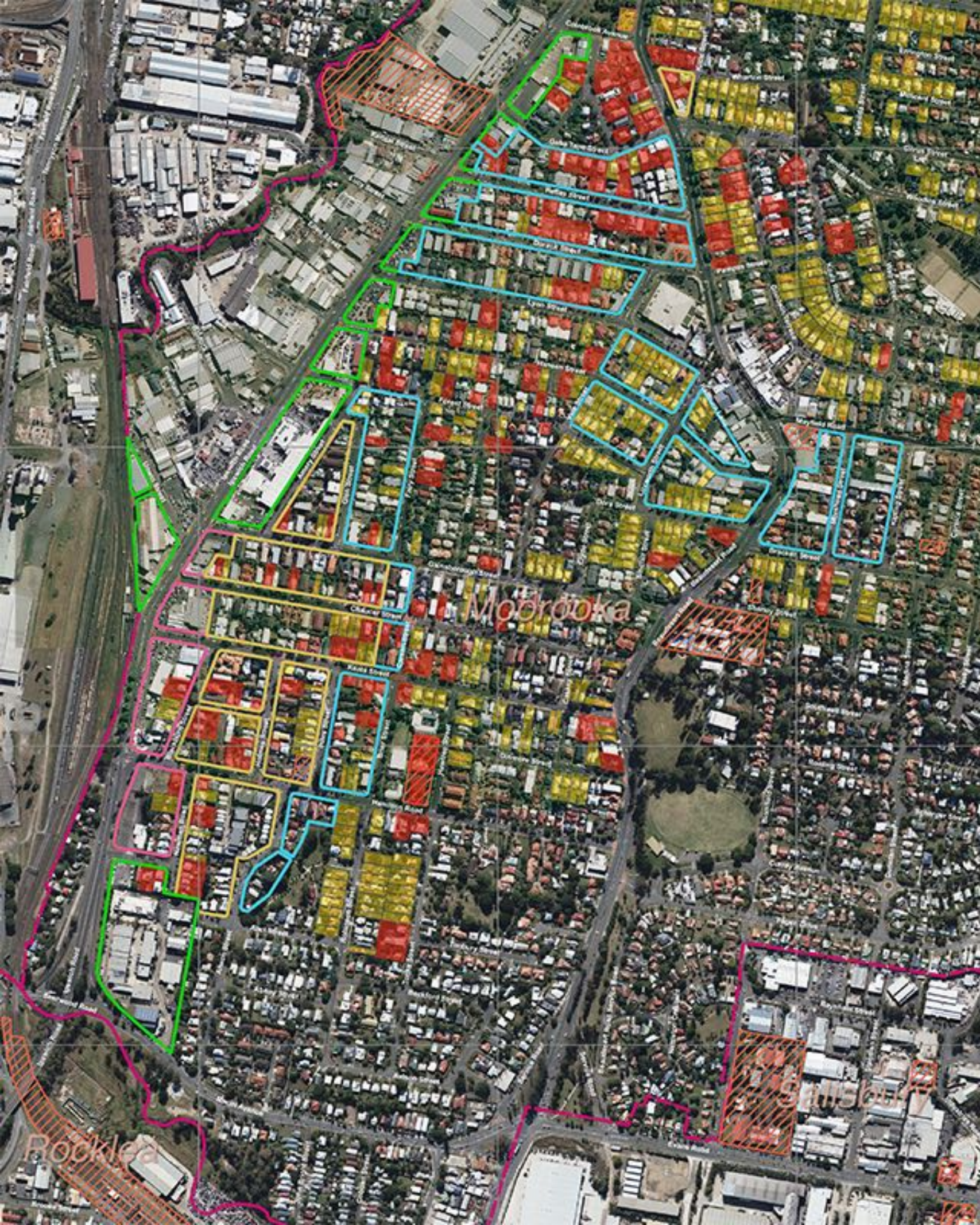
**Public Transport:** Salisbury Station, Brisbane Christian College, Salisbury Community Sports Club.



# BCC PROPOSAL MARK UP OF THE 1946 AERIAL







## LEGEND

### Proposed Planning Zones

-  8 Storeys
-  5 Storeys
-  4 Storeys
-  3 Storeys

 BCC Local Heritage Place

### Character Housing

-  Pre-1936
-  Pre-1946

Data Sources: Qimagery Qdata

## Moorooka, Salisbury, Nathan Neighbourhood Plan Heritage Character Housing

**saveM♥♥R♥♥KA.org**

CREATED BY

LK

LAST MODIFIED

27-7-2021

VERSION

1

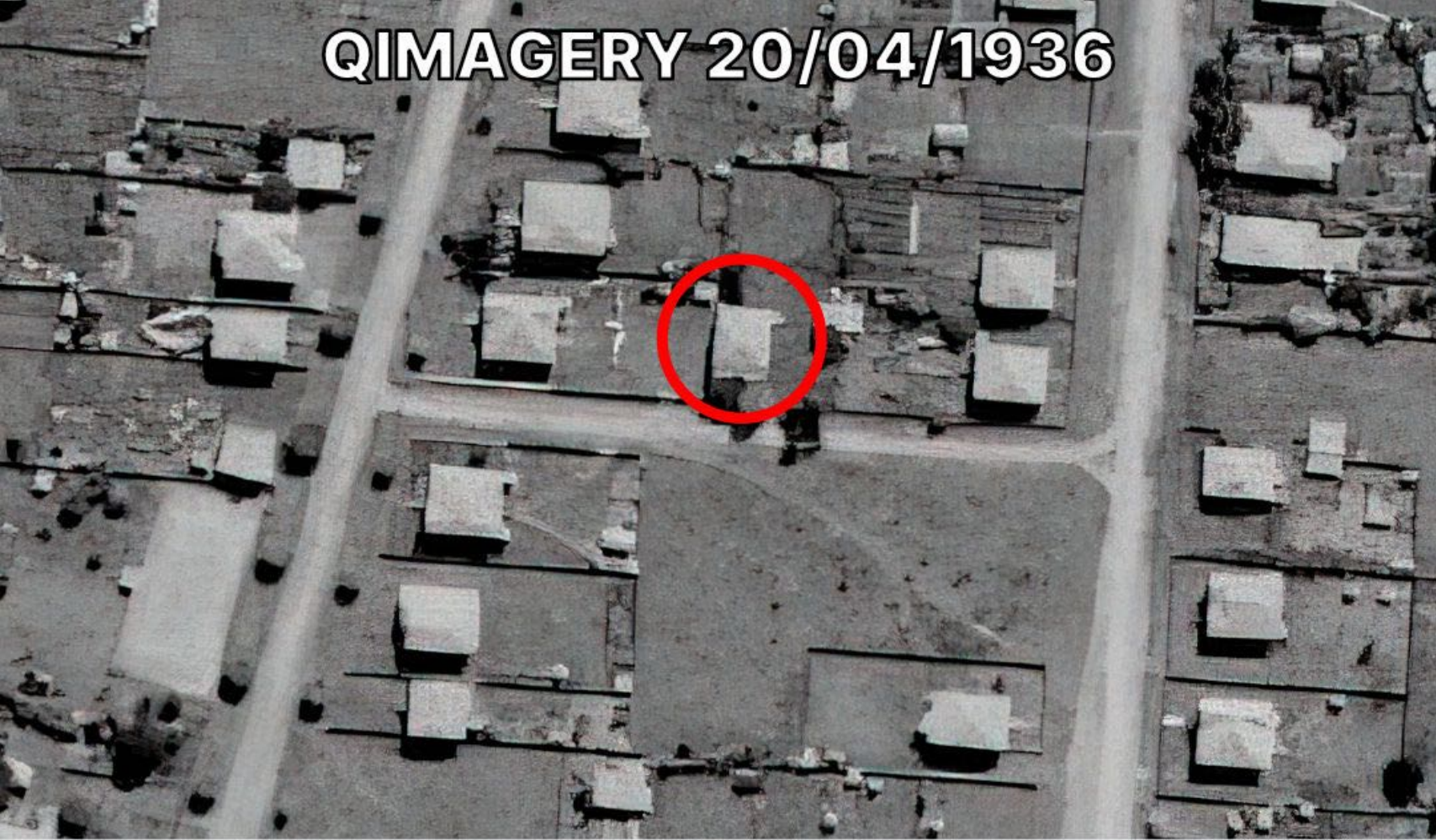
**Figure  
F1**



**Existing character homes**



QIMAGERY 20/04/1936



QIMAGERY 20/04/1936



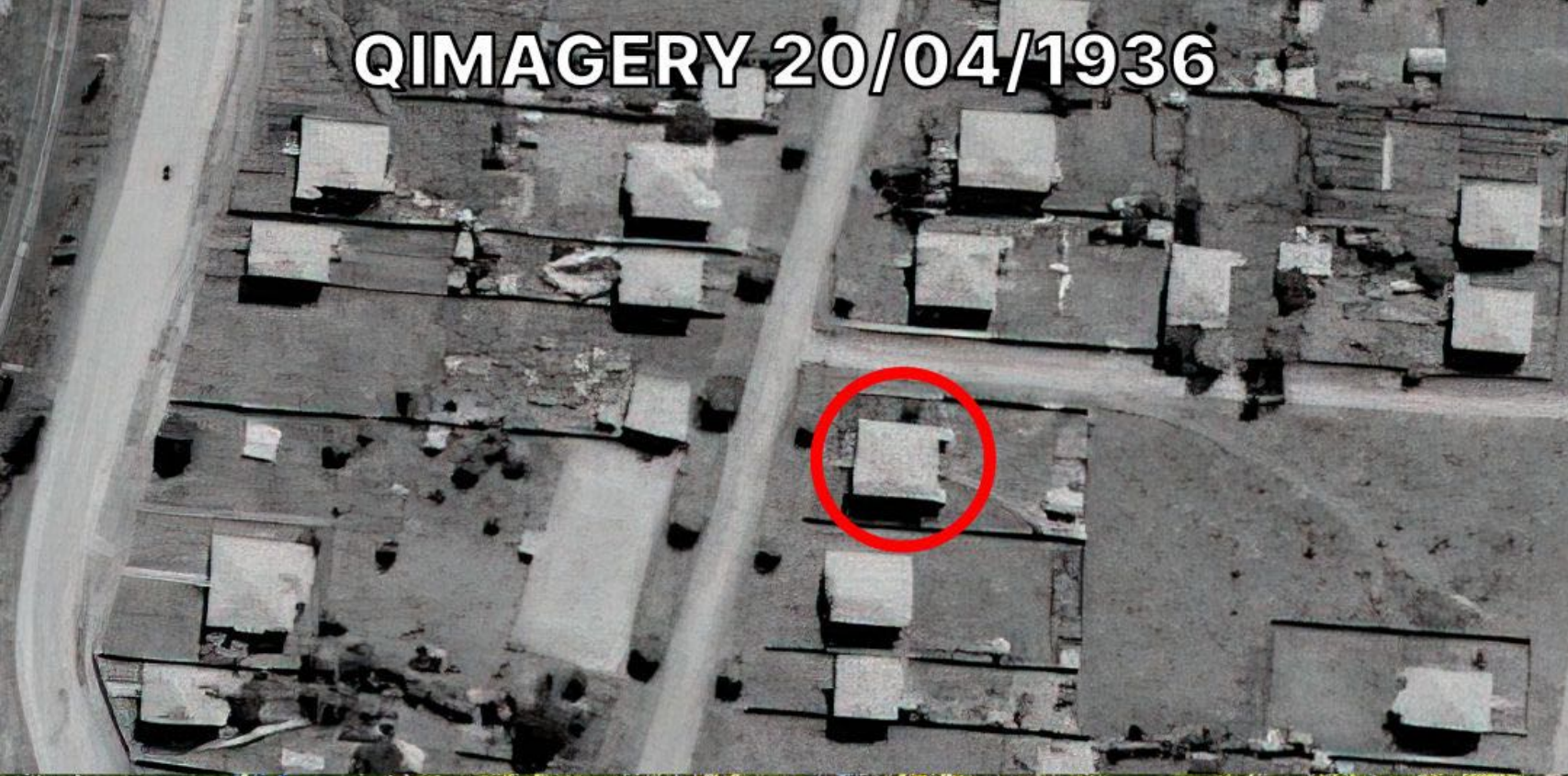
March 21, 2021



25/7/2021



**QIMAGERY 20/04/1936**



**QIMAGERY 31/05/1946**



**25/7/2021**



**25/7/2021**



QIMAGERY 31/05/1946



QIMAGERY 31/05/1946





QIMAGERY 20/04/1936



QIMAGERY 20/04/1936



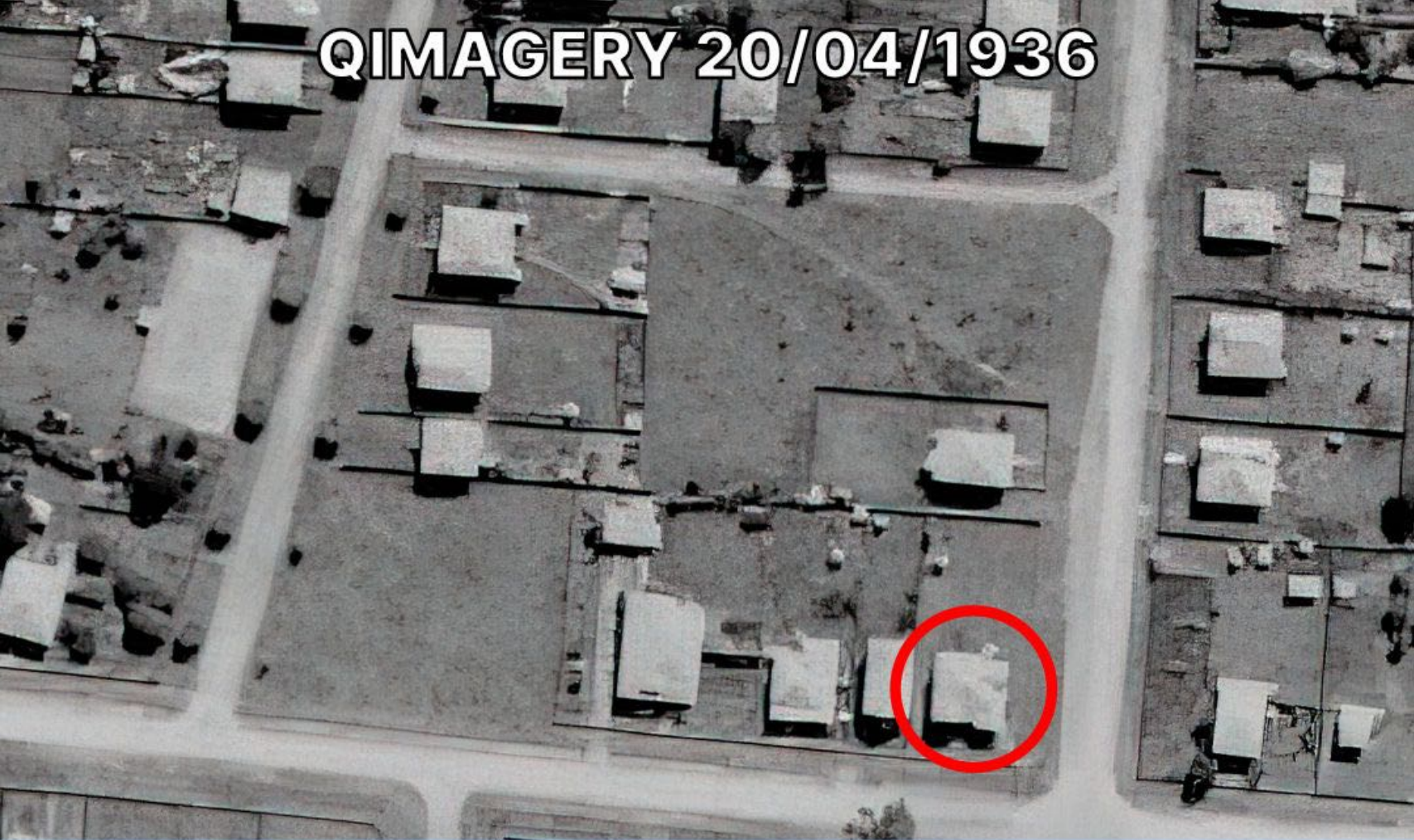
25/07/2021



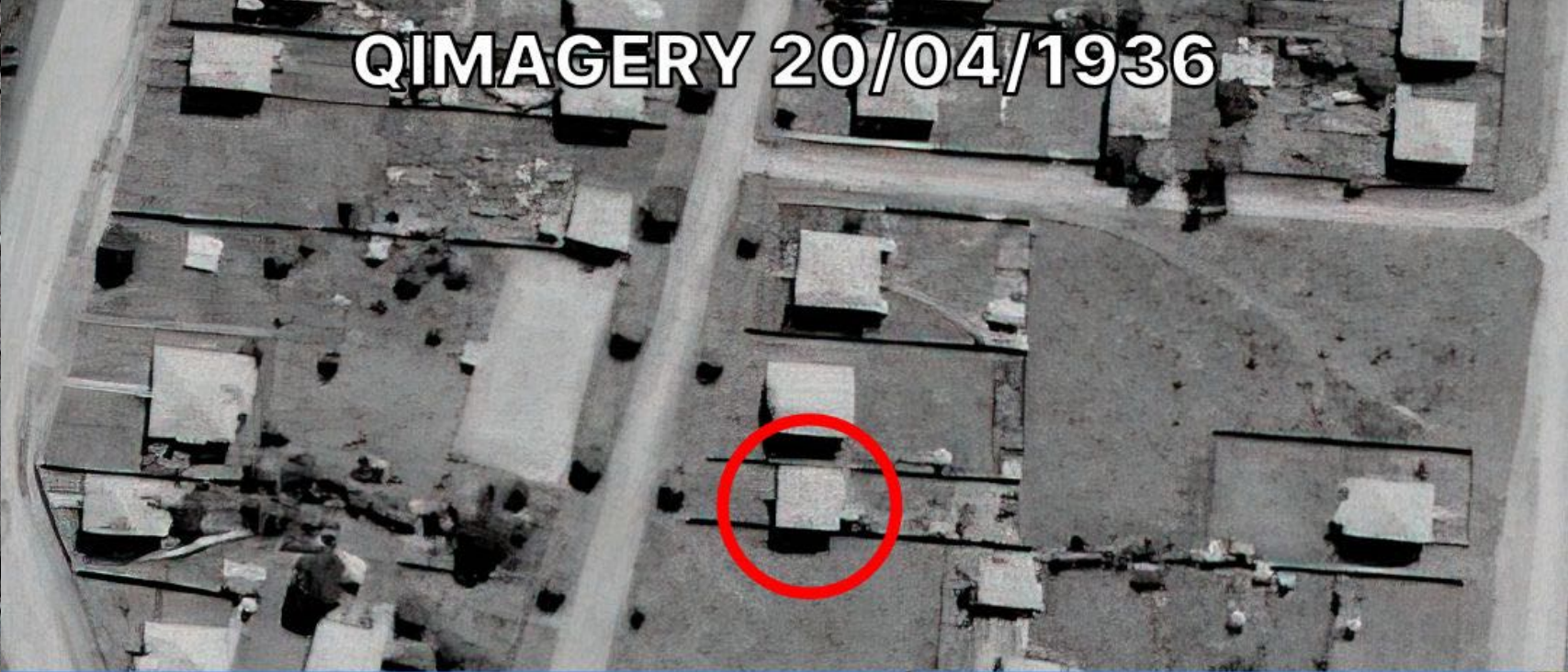
25/7/2021



QIMAGERY 20/04/1936



QIMAGERY 20/04/1936



25/07/2021



25/7/2021



**More character homes  
within the proposed  
development area**





Save  
Our  
Salisbury









































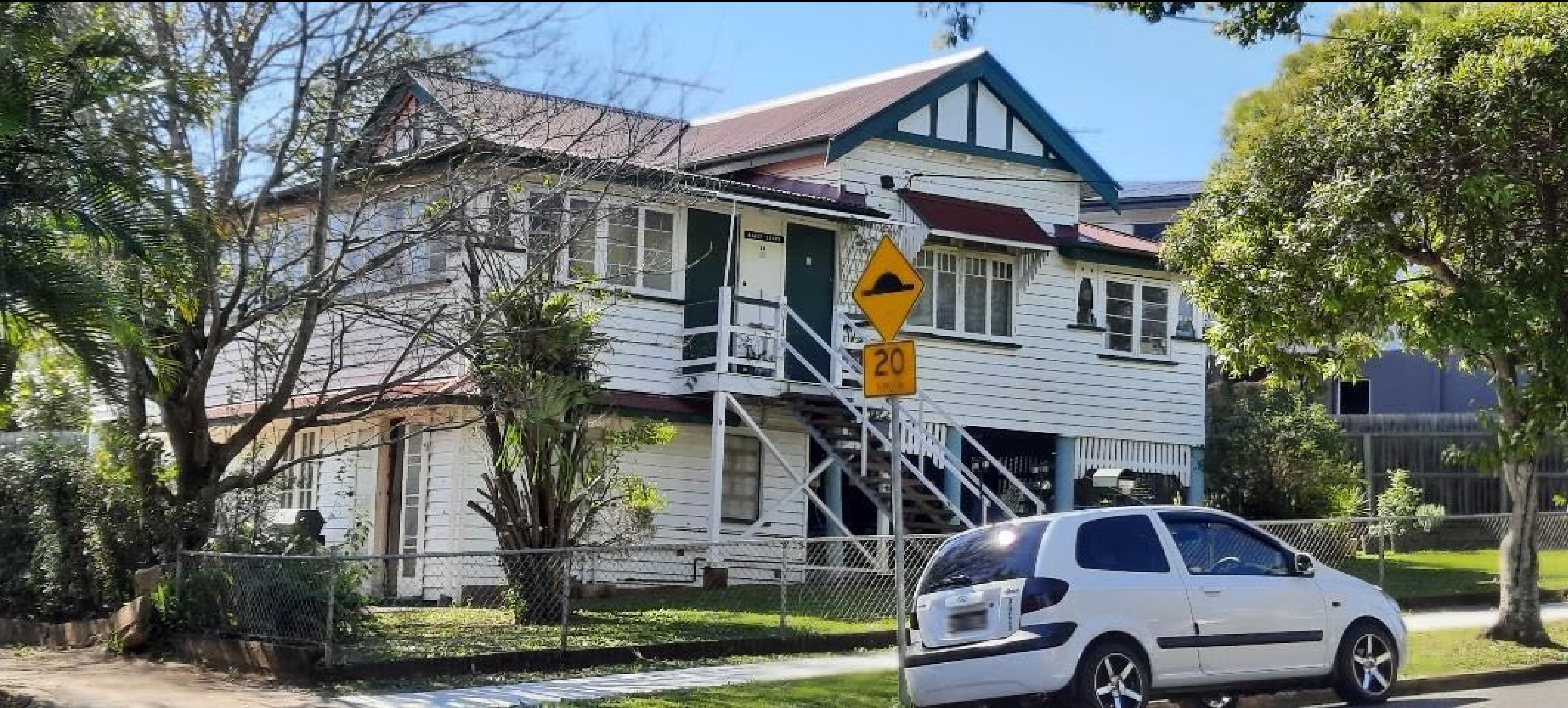




















































































COMMUNITY  
NEED  
NOT  
DEVELOPER  
GREED  
LET OUR VOICES







**More character..**



Figs..





Figs..

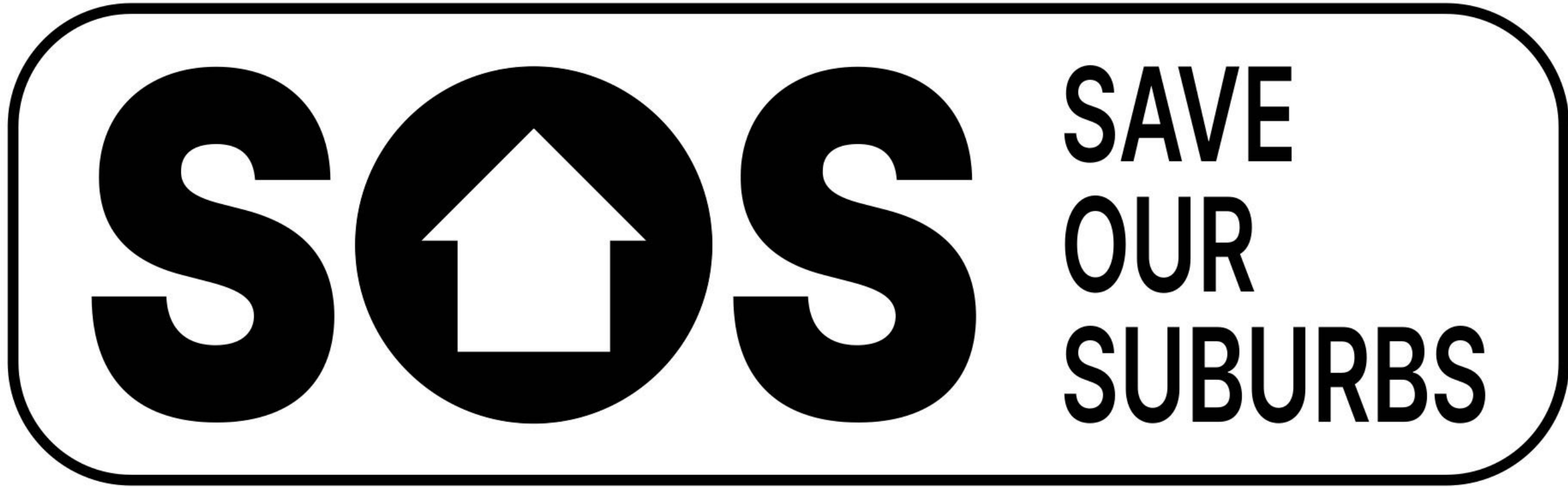




# Homes!







**saveM♥♥R♥♥KA.org**